

Kalıp ve İskele Sistemleri

Formwork & Scaffolding Systems

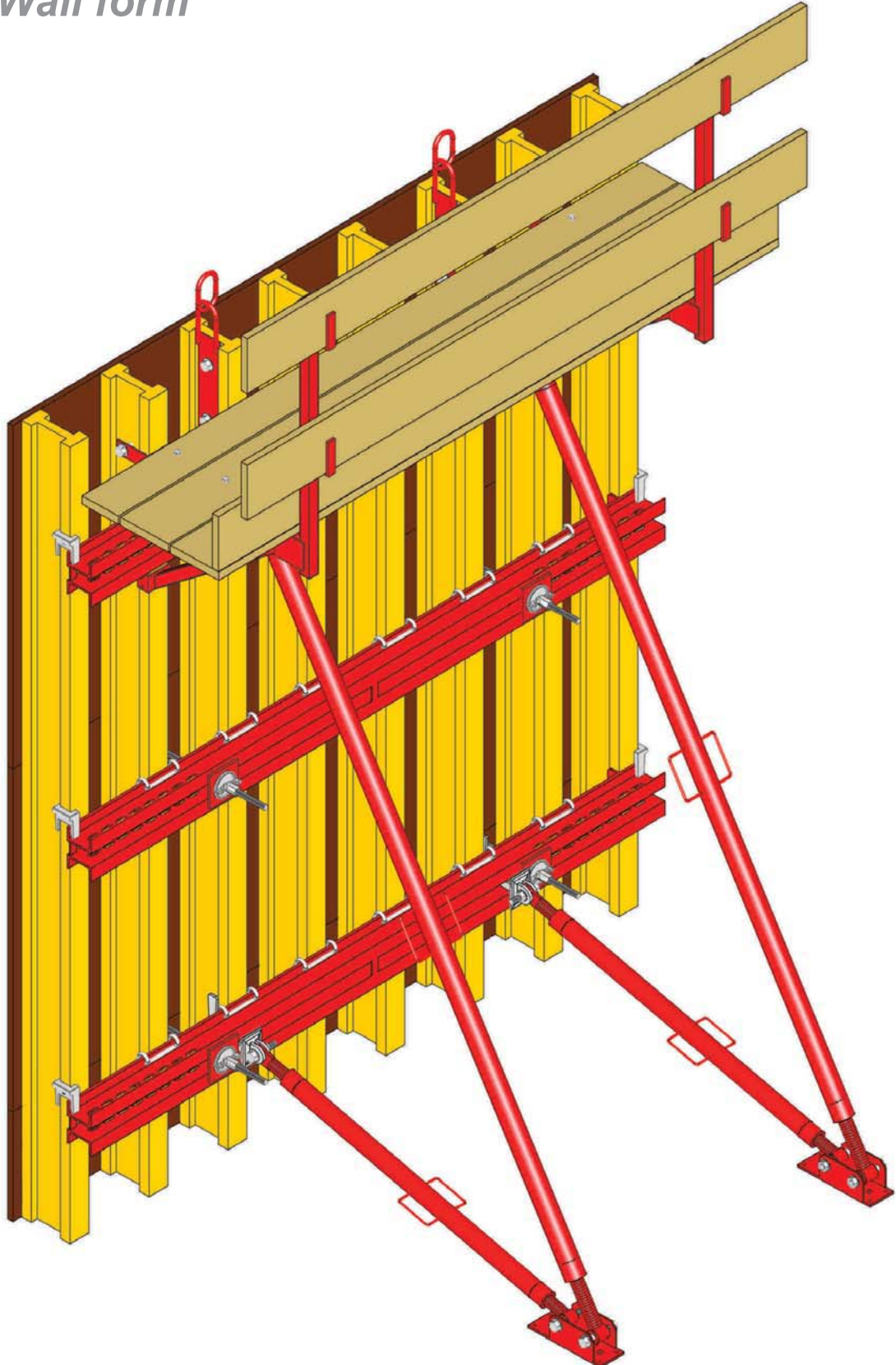


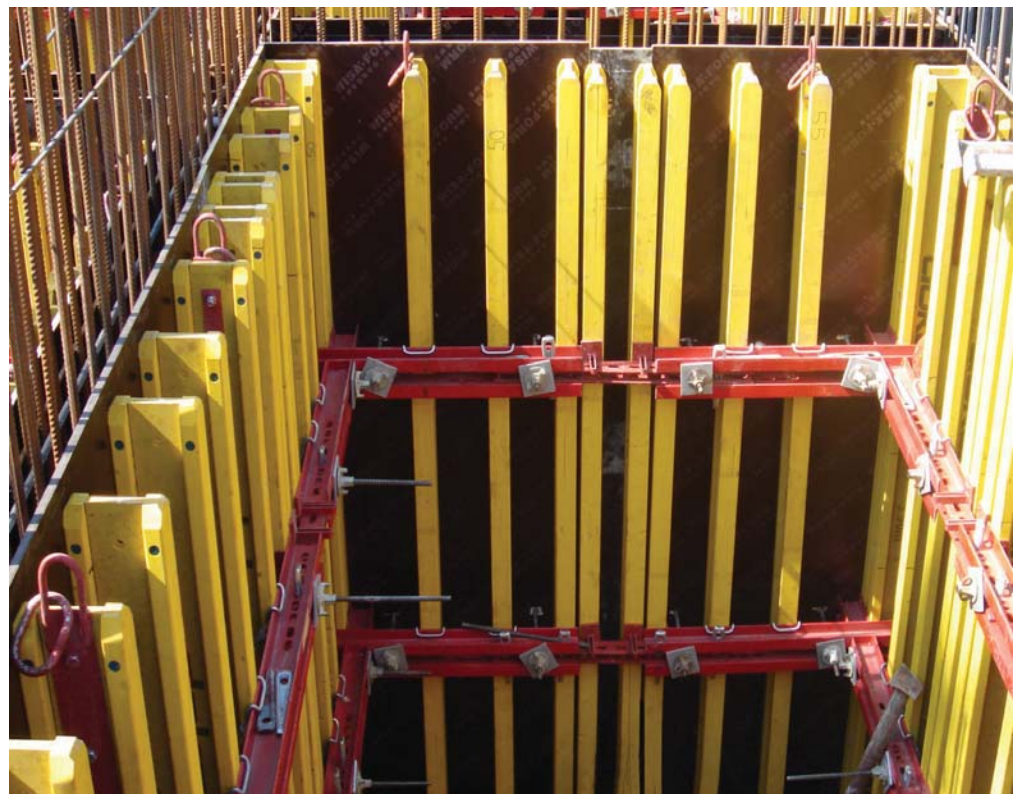
Ürün kataloğu
Product catalog

1984 ✓

Perde Kalıbı H20

Wall form





Perde Kalıbı H20

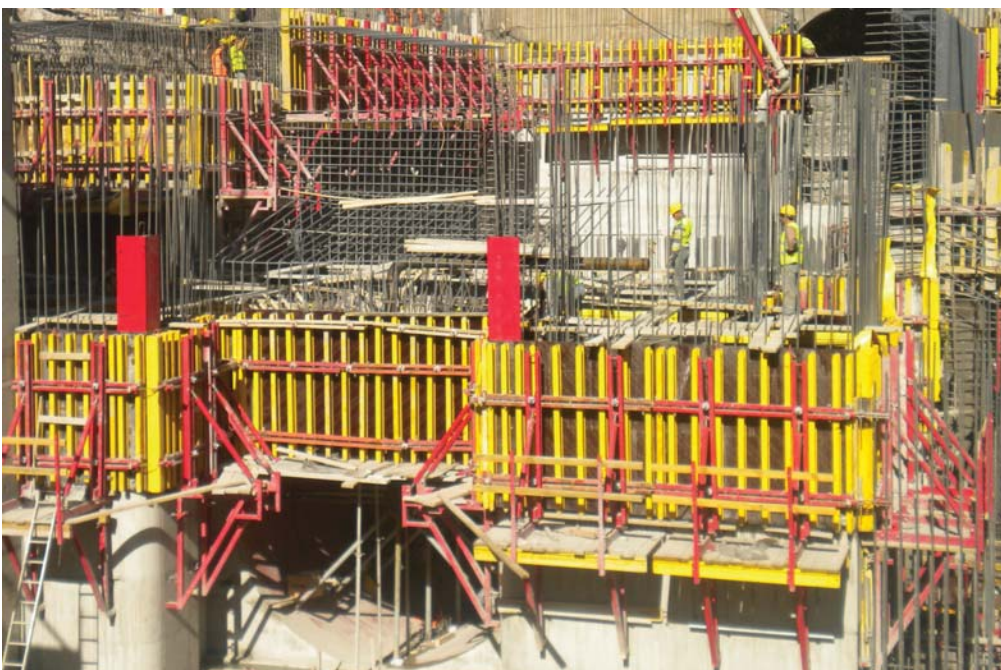
Wall Form





Perde Kalıbı H20

Wall Form

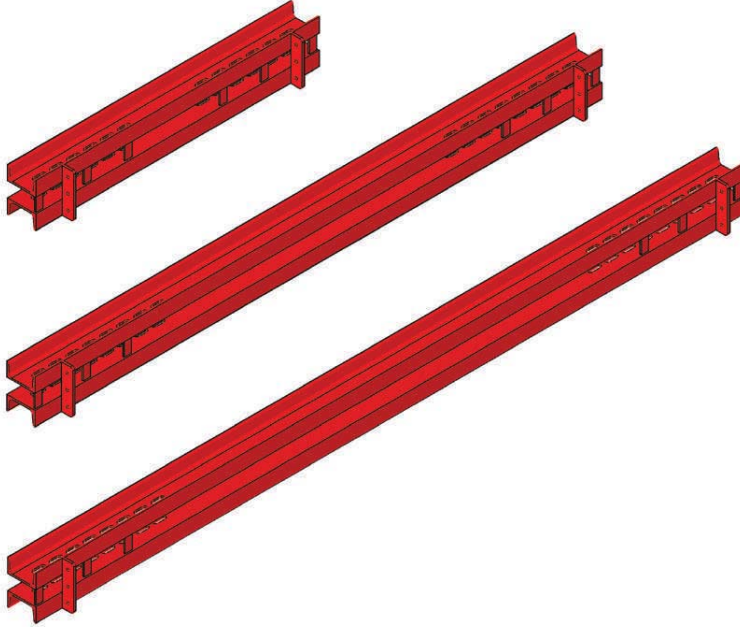


Perde Kalıbı H20

Wall Form

Çelik kuşak SRZ / Steel waler SRZ

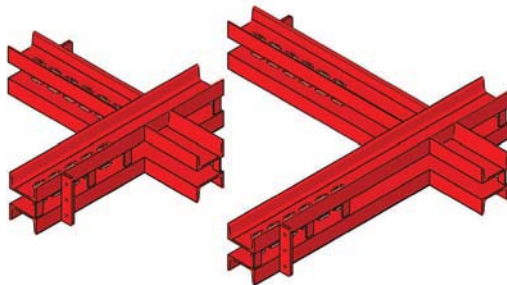
parça / item no kg



595 cm	051 0595	126,20
570 cm	051 0570	120,90
545 cm	051 0545	115,60
520 cm	051 0520	110,30
495 cm	051 0495	105,00
470 cm	051 0470	99,70
445 cm	051 0445	94,40
420 cm	051 0420	89,10
395 cm	051 0395	83,80
370 cm	051 0370	78,50
345 cm	051 0345	73,20
320 cm	051 0320	67,90
295 cm	051 0295	62,60
270 cm	051 0270	57,30
245 cm	051 0245	52,00
220 cm	051 0220	46,70
195 cm	051 0195	41,40
170 cm	051 0170	36,00
145 cm	051 0145	30,80
120 cm	051 0120	25,50
95 cm	051 0095	20,20
70 cm	051 0070	14,80
45 cm	051 0045	9,70
100 cm	051 0010	21,50

Özel boyda kuşak imalatımız mevcuttur / Special lengths are available if required

İç köşe kuşak LSRZ 20 / Inner steel waler LSRZ 20



95/95 cm	052 9595	38,20
90/90 cm	052 9090	36,10
85/85 cm	052 8585	33,90
80/80 cm	052 8080	32,10
75/75 cm	052 7575	30,00
70/70 cm	052 7070	27,90
65/65 cm	052 6565	25,80
60/60 cm	052 6060	24,00
55/55 cm	052 5555	21,80
50/50 cm	052 5050	19,70

Özel boyda kuşak imalatımız mevcuttur / Special lengths are available if required

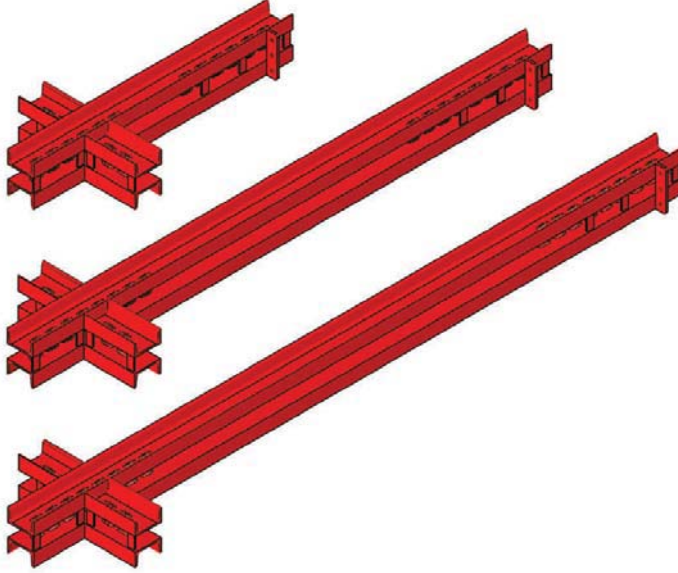
100 cm	052 0010	21,50
--------	-----------------	-------

Perde Kalıbı H20

Wall Form

İç Köşe kuşak VSRZ 20 / Inner steel waler VSRZ 20

parça / item no kg

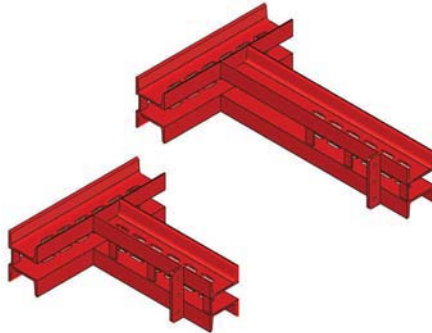


395/45 cm	052 0395	91,20
370/45 cm	052 0370	85,90
345/45 cm	052 0345	80,60
320/45 cm	052 0320	75,30
295/45 cm	052 0295	70,00
270/45 cm	052 0270	64,70
245/45 cm	052 0245	59,40
220/45 cm	052 0220	54,10
195/45 cm	052 0195	48,80
170/45 cm	052 0170	43,40
145/45 cm	052 0145	38,20
120/45 cm	052 0120	32,90
95/45 cm	052 0095	27,60
70/45 cm	052 0070	22,20
45/45 cm	052 0045	17,10

Özel boyda kuşak imalatımız mevcuttur / Special lengths are available if required

100/45 cm **052 1020** 29,00

İç köşe kuşak TSRZ 20 / Inner steel waler TSRZ 20



95/49 cm	052 9549	24,40
90/49 cm	052 9049	23,30
85/49 cm	052 8549	22,30
80/49 cm	052 8049	21,20
75/49 cm	052 7549	20,20
70/49 cm	052 7049	19,10
65/49 cm	052 6549	18,00
60/49 cm	052 6049	17,00
55/49 cm	052 5549	15,90
50/49 cm	052 5049	14,80

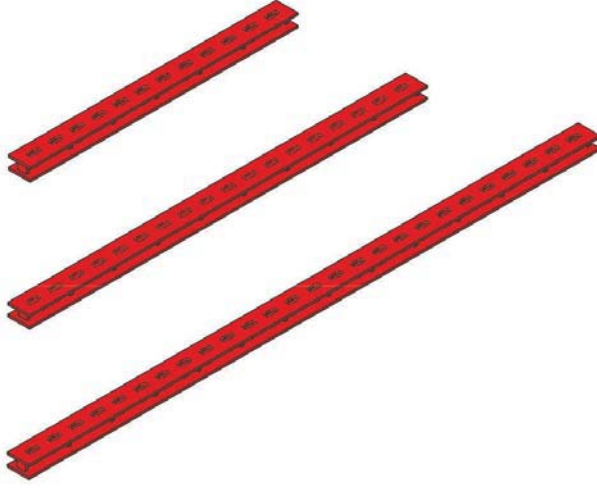
Özel boyda kuşak imalatımız mevcuttur / Special lengths are available if required

100 cm **052 8817** 25,50

Kuşak birleştirme VKZ / Coupling VKZ

parça / item no

kg



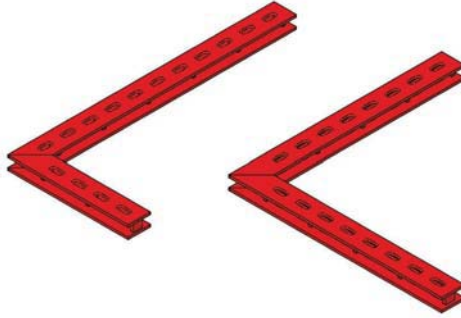
211 cm
147 cm
99 cm
83 cm
75 cm

060 0211
060 0147
060 0099
060 0083
060 0075

19,00
13,20
9,00
8,00
7,00

Aksesuar elemanı: Kama KZ 4 adet / Accessories: 4 pcs of wedge KZ

Köşe kuşak birleştirme EKZ / Corner coupling EKZ



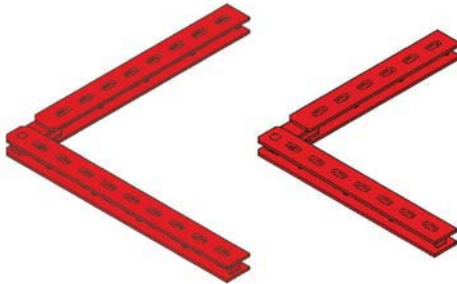
95/43 cm
76/76 cm

060 9543
060 7676

12,10
13,40

Aksesuar elemanı: Kama KZ 4 adet / Accessories: 4 pcs of wedge KZ

Mafsallı kuşak birleştirme GKZ / Articulated coupling GKZ



60/60 cm
76/76 cm



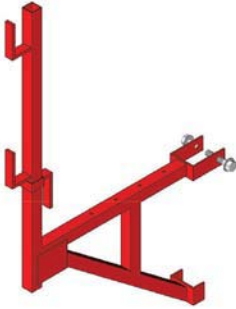
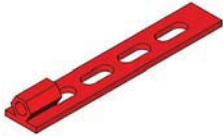
060 6060
060 7575







11,50
14,20

Aksesuar elemanı: Kama KZ 4 adet / Accessories: 4 pcs of wedge KZ

Perde Kalıbı H20

Wall Form

Vinç askı seti H20 / Crane splice H20		parça / item no	kg
2 tk. M16/60 somun civata ile birlikte / Complete with 2 sets of M16/60		060 0011	4,20
Uzatma elemanı H20 / Extension splice H20			
4 tk. M16/60 somun civata ile birlikte / Complete with 4 sets of M16/60	67 cm 	060 0012	5,30
Konsol H20 / Console H20			
1 tk. M16/120 somun civata ile birlikte / Complete with 1 set of M16/120		070 0011	11,00
Aksesuar elemanı: 3 tk. M8/120 / Accessories: 3 sets of M8/120			
Perde alın elemanı / Stopend tie			
	39 cm 	060 0013	2,00
Aksesuar elemanları: 2 ad.Kama KZ - 1 ad. Tierod 60 cm. 2 ad. kelebek somun - 2 ad. sac ayna Accessories: 2 x Wedge KZ - 1 x tierod 60 cm - 2 x wing nut - 2 x counter plate			

Kuşak kanca seti H20 / Hook strap H20	parça / item no	kg
<p>2 ad. M12 somun ve sağ-sol tırnağı ile birlikte / Complete with: 2 x M12 nut and 2 x R-L hook</p> 	004 1111	0,80
Köşe boynu SKZ / Corner clamp SKZ		
 <p>Aksesuar elemanı: 1 ad. Kama KZ / Accessories: 1 pcs of wedge KZ</p>	004 1121	2,60
Kama KZ / Wedge KZ		
	004 1131	0,80
Kama K / Wedge K		
	060 0014	0,30
Kuşak tespit elemanı KDP / Coupling plate KDP		
 <p>Aksesuar elemanı: 1 ad. Kama K / Accessories: 1 pcs of wedge K</p>	060 0015	1,20
H20 Klips / H20 Clips		
	004 1141	0,70

Perde Kalıbı H20

Wall Form

Payanda / Push-Pull prop

parça / item no

kg



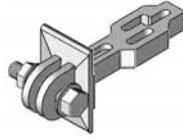
110/200 cm	070 0110	12,90
160/250 cm	070 0160	15,05
210/300 cm	070 0210	17,20
260/350 cm	070 0260	19,30
310/400 cm	070 0310	21,45
360/450 cm	070 0360	23,55
410/500 cm	070 0410	37,65
510/600 cm	070 0510	43,00
610/700 cm	070 0610	55,00
710/800 cm	070 0710	60,50
810/900 cm	070 0810	88,00
610/1000 cm	070 0611	102,00

Payanda üst başlığı / Kicker head

1 tk. M16/60 ile birlikte / Complete with 1 set of M16/60

004 1151

2,43



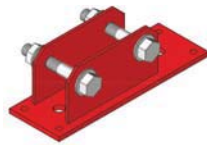
Aksesuar elemanı: 1 ad. Kama K / Accessories: 1 pcs of wedge K

Payanda alt başlığı / Prop base plate

2 tk. M16/100 ile birlikte / Complete with 2 sets of M16/100

060 0016

4,00

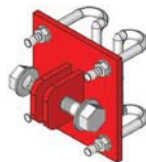


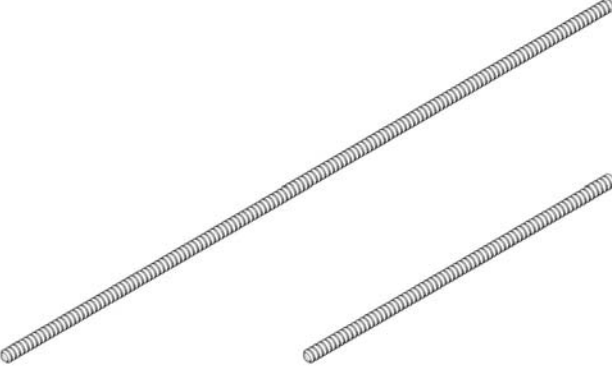






H20 Payanda bağlantı başlığı / Head piece H20

4 ad. M12 somun, 1 tk. M16/60 ve 2 ad. kancası ile birlikte / Complete with 4 pcs of M12 nut, 1 set of M16/60 and 2 pcs of hook

004 1112

2,25



Tie - rod \varnothing 17 mm		parça / item no	kg
	50 cm	017 0050	0,72
	60 cm	017 0060	0,86
	80 cm	017 0080	1,15
	100 cm	017 0100	1,44
	120 cm	017 0120	1,73
	125 cm	017 0125	1,80
	135 cm	017 0135	1,94
	150 cm	017 0150	2,16
	180 cm	017 0180	2,59
	200 cm	017 0200	2,88
	225 cm	017 0225	3,24
	250 cm	017 0250	3,60
	270 cm	017 0270	3,89
	300 cm	017 0300	4,32
	350 cm	017 0350	5,00
	400 cm	017 0400	5,76
	450 cm	017 0450	6,48
	475 cm	017 0475	6,84
500 cm	017 0500	7,20	
600 cm	017 0600	8,64	
Kelebek somun \varnothing 17 mm / Wing nut \varnothing 17 mm			
	D=10 cm	004 1161	0,61
Sac ayna / Counter plate			
	120*100*10 mm	004 0017	0,93
Su tutucu ara somun / Waterstop			
		004 1171	0,50
Sunta vidası 6/60 / Plywood screw 6/60			
		005 0660	0,007
Trifon vidası 8/40 / Trifon screw 8/40			
		005 0840	0,007
M8/120 somun civata / M8/120 screw & nut			
		005 0812	0,05

Perde Kalıbı H20

Wall Form

Mafsallı somun \varnothing 17 mm / Wing nut with pivot plate \varnothing 17 mm

parça / item no

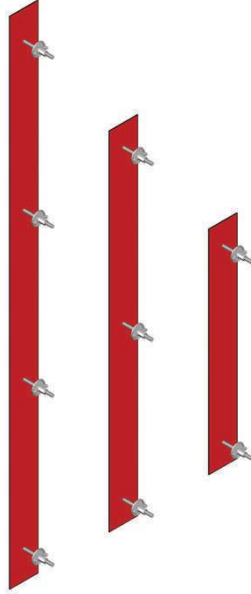
kg



004 1164

1,16

Söküm laması / Strip plate



400 cm
350 cm
300 cm
250 cm
200 cm
150 cm
100 cm

060 4001
060 3501
060 3001
060 2501
060 2001
060 1501
060 1001

18,20
15,90
13,80
11,40
9,30
7,15
4,80

Aksesuar elemanı kelebek somun / Accessories: Wing nuts

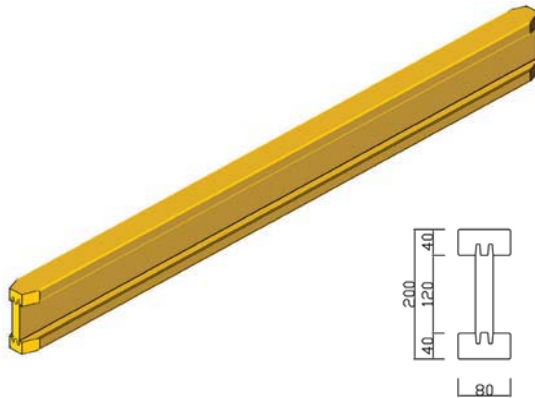
Özel boyda imalatımız mevcuttur / Special lengths are available if required

100 cm

060 0001

4,80

Ahşap kiriş H20 / Wooden beam H20



145 cm
190 cm
215 cm
245 cm
265 cm
290 cm
330 cm
360 cm
390 cm
420 cm
450 cm
490 cm
550 cm
590 cm

007 0145
007 0190
007 0215
007 0245
007 0265
007 0290
007 0330
007 0360
007 0390
007 0420
007 0450
007 0490
007 0550
007 0590

6,70
8,80
9,90
11,30
12,20
13,40
15,20
16,60
18,00
19,30
20,70
22,60
25,30
27,15

Plywood



21 mm
18 mm

007 2100
007 1800

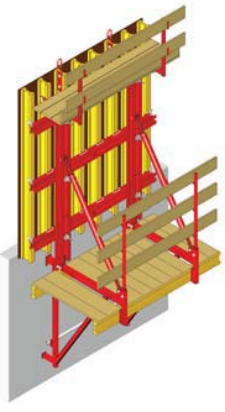
Kalıp ve İskele Sistemleri

Formwork & Scaffolding Systems



Ürün kataloğu
Product catalog

1984 ✓



MAK

Mühendislik Sanayi ve Ticaret Ltd. Őti.

Büro/Office: Őerefli Sokak No: 34/2 Tandođan-ANKARA/TÜRKİYE

Tel: + 90 312 223 40 58 - 223 70 08

Fax: + 90 312 213 70 87

GSM: + 90 530 644 73 23

Fabrika/Factory: Eski İstanbul Yolu 25. Km. Sarayköy / ANKARA

mak@mak.com.tr www.mak.com.tr